



# INVESTIGATOR PLUS INSTALLATION GUIDE

Product Version 3.0  
Updated 26 May 2023

## Table of Contents

About Investigator Plus Documentation.....	2
Purpose & Audience .....	2
1. Hardware & Software Requirements.....	3
A. Hardware Requirements.....	3
Investigator Workstation.....	3
B. Software Requirements .....	3
Investigator Workstation.....	3
Analysis Consultant Desktop.....	3
C. Pre-Requisites/Readiness Checklist .....	4
Investigator Plus Service Account.....	4
D. Licensing Requirements .....	4
2. Installation of Investigator Plus .....	4
E. Download .....	4
F. Setup.....	4
G. Architecture Diagrams .....	8
Investigator Plus Architecture Diagram.....	8
Investigator Plus Network Architecture.....	8
Power Platform Add-On.....	9
Learn more about Adopteq AB.....	10

## About Investigator Plus Documentation

Documentation for Adopteq's Investigator Plus Product(s):

- Release Notes – Describes the current release of Investigator Plus and any new and enhanced features, resolved issues, and known issues.
- Installation Guide – An orientation to the product's basic purposes, features, and capabilities. It documents system requirements and explains how to install the software and obtain licensing.
- Planning & Operation Guide – summary of Investigator Plus's primary components and features, overviews of component and process instructions and guidance on how to execute content migration to multiple targets from Notes/Domino.

Please note that Lotus Notes and Domino are used interchangeably within this document for ease of legacy understanding and wording.

## Purpose & Audience

This document assumes the reader has a minimum of one year's experience using a Notes Client and has a good general knowledge of Domino Administration, the Domino designer client as well as Windows administration, SharePoint, and the Power Platform. If Domino/Notes topics mentioned in this guide are not understood, please refer to the HCL Notes or System administration documentation.

## 1. Hardware & Software Requirements

Investigator Plus can be installed either on-premises or cloud-based such as Azure. The below requirements are standardized, and the actual quantity and specification may change depending upon the analysis size you are executing.

### A. Hardware Requirements

#### Investigator Workstation

The master Investigator workstation is the first worker you install in your environment and will host SQL Express (for larger setups, SQL Server or Azure SQL can be used).

	Comment
<b>Windows WorkStation version 10 or Windows Server</b>	Or Azure instances (cheaper than on premises for larger environments)
<b>Minimum RAM 16GB (32GB recommended)</b>	If running SQL on premises, minimum 32GB requested
<b>Minimum 80GB hard drive</b>	
<b>Minimum 2 CPU/Core/VCPU</b>	

### B. Software Requirements

#### Investigator Workstation

	Comment
<b>HCL Notes 9.01 or 10.x Notes Client, Designer Client, and Admin client</b>	Version 11 or higher is not supported
<b>Microsoft Office (or at minimum Excel)</b>	
<b>SQL Express</b>	If using multi-node set up (i.e., Multiple Investigator servers). Azure SQL is lower cost and gateway hardware requirement is reduced.

#### Analysis Consultant Desktop

	Comment
<b>HCL Notes 9.01 or 10.x Notes Client, Designer Client, and Admin client</b>	Version 11 or higher is not supported
<b>Microsoft Office (or at minimum Excel)</b>	
<b>Power BI Desktop</b>	This is used to create dynamic reports showing outcomes of the analysis.

	To publish reports, a Power BI Pro license will be required.
<b>Power App (Optional)</b>	This is used by Adopteq consulting to document Hawkeye analysis and update data points directly in SQL. See architecture diagrams for further context.

## C. Pre-Requisites/Readiness Checklist

Before implementing Investigator Plus, review the pre-requisite checklist to ensure the environment is prepared to perform a successful scan. The pre-requisite checklist for Investigator Plus will be provided by our services organization or ask [sales@adopteq.com](mailto:sales@adopteq.com) for the latest version.

### Investigator Plus Service Account

For all scan types, a Lotus Notes account is required with sufficient access to all content in scope for scanning in each database. We recommend (as per the pre-requisites) you run Investigator plus using service accounts.

- Lotus Notes ID
- Active Directory Account

Refer to the pre-requisites checklist for required security permissions.

## D. Licensing Requirements

Before installing Investigator Plus, ensure you have sufficient licenses to conduct the scans. Investigator Plus is licensed per database L2 level scan. Each database collected L2 > will consume one (1) license. Investigator Plus may be installed without a valid license, however you will only be able to run an L1 scan (highest level inventory collection). If you are unsure of your license options, contact [sales@adopteq.com](mailto:sales@adopteq.com).

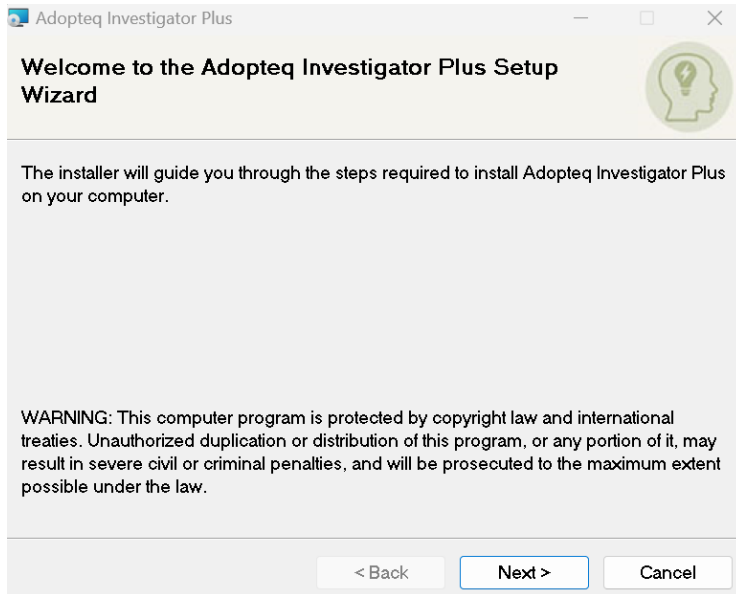
# 2. Installation of Investigator Plus

## E. Download

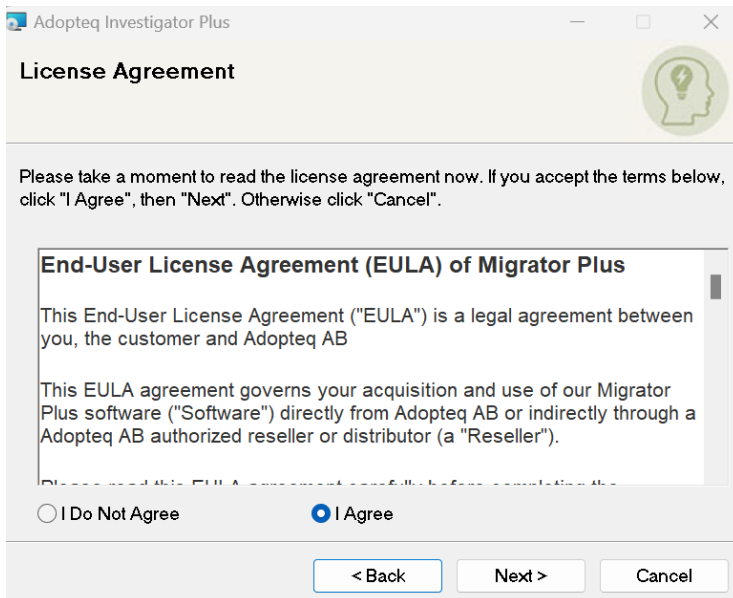
Adopteq maintains the latest release of Investigator Plus Setup installation package on a secure web site. Adopteq will provide the link and credentials to the download location.

## F. Setup

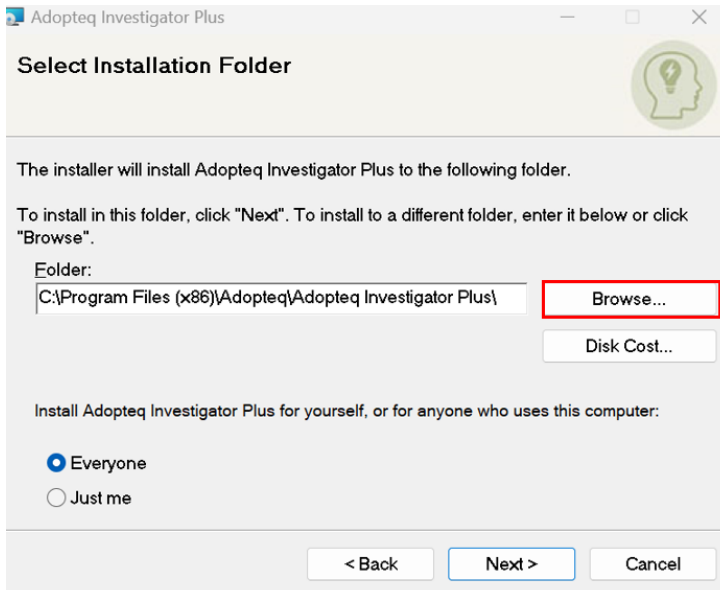
1. Download the installable file shared with you and double click on it to start the installation.



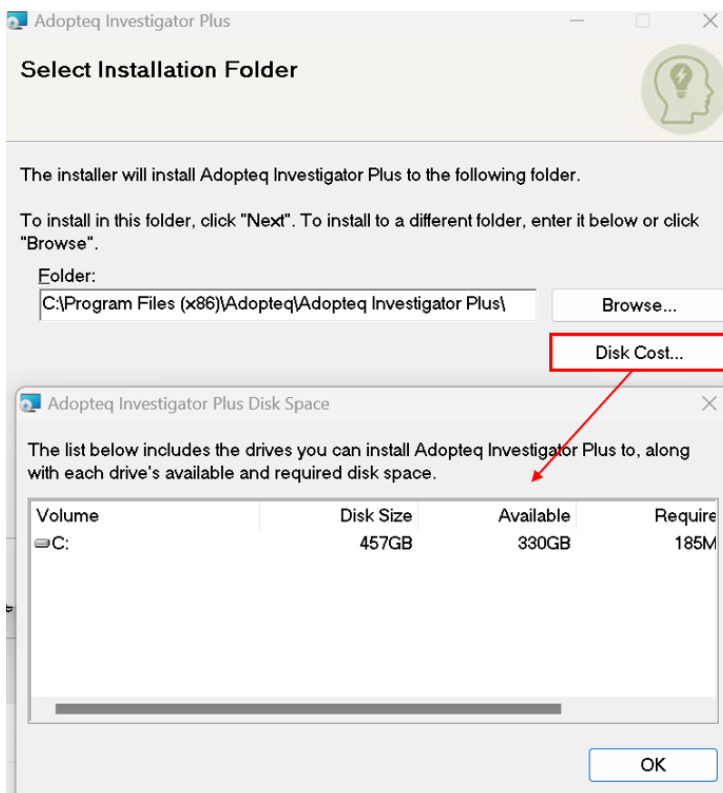
2. Click on 'Next'
3. Review the License agreement and select "I Agree" then click on 'Next'.



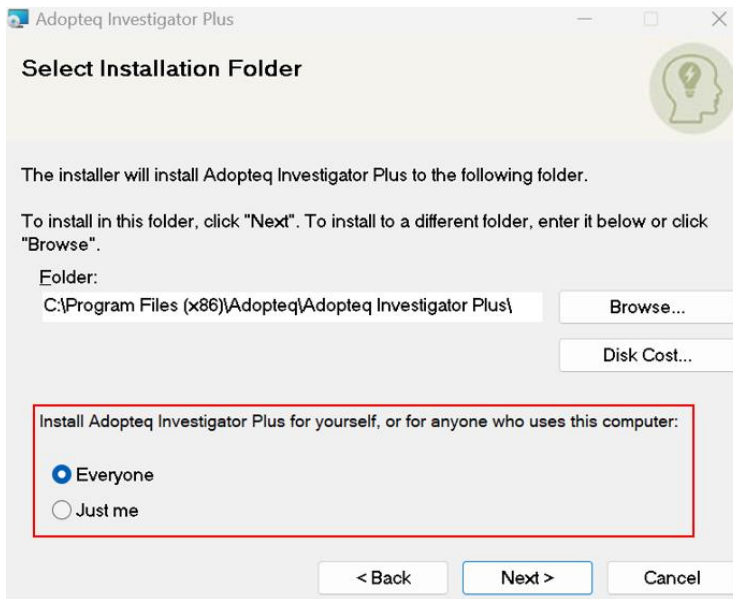
4. Select the folder path for the Investigator Plus installation. You can use the 'browse' button to navigate to the folder or manually enter the file path in the text box.



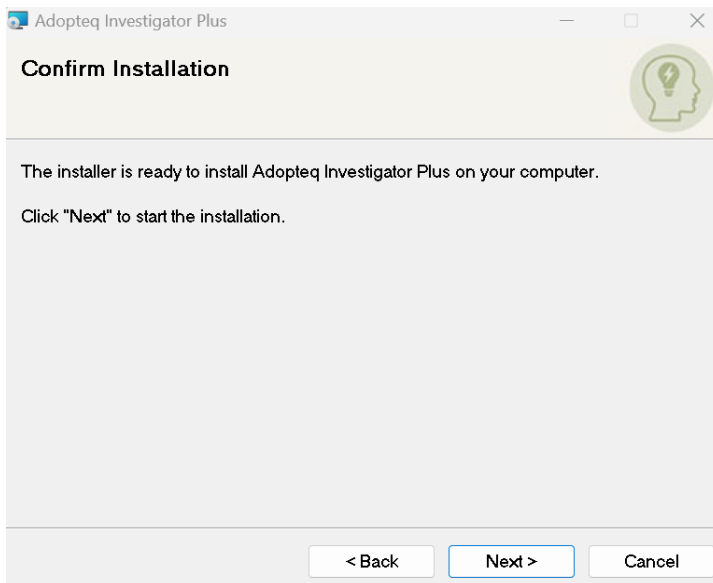
5. For quick information on the drive space availability and requirements for the Investigator Plus installation, click on 'disk cost'.



6. Choose user preferences (install for current user or for everyone who uses the computer) for installation availability then click 'Next' to continue.

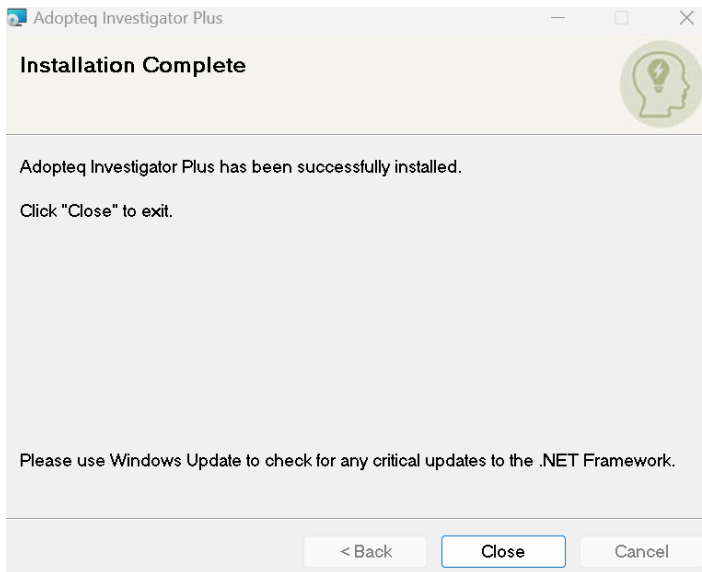


7. Click on 'Next' to continue then again 'Next' to begin the installation.



8. The installation will take a few minutes to complete and upon completion, a window will appear verifying the status. Click on 'Next'.
9. Click on 'Close' to exit the installation wizard.

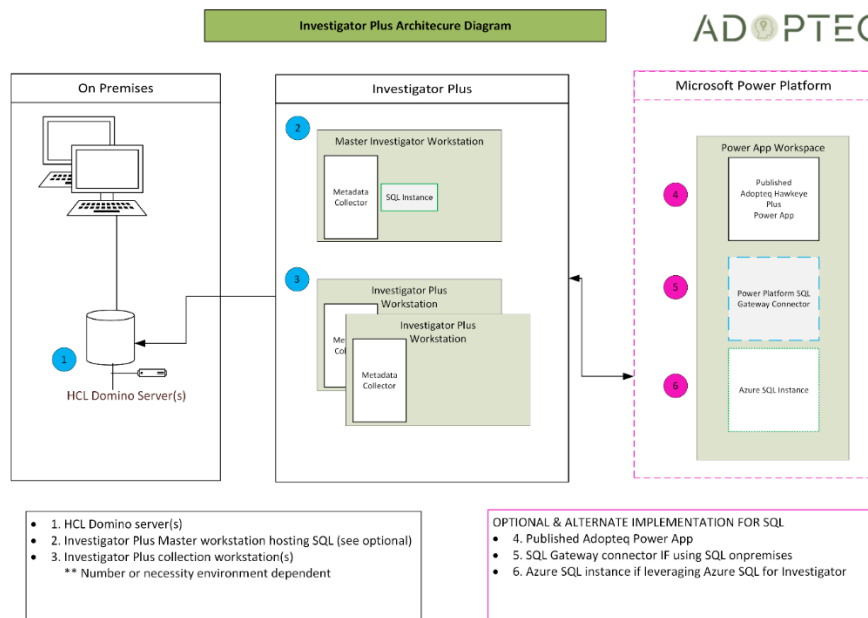




## G. Architecture Diagrams

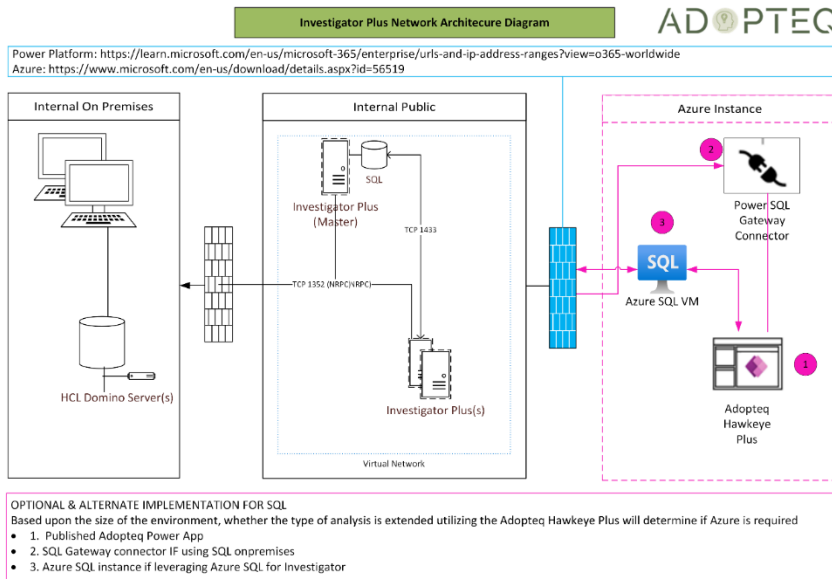
### Investigator Plus Architecture Diagram

Investigator Plus implementation consists of at least one Investigator Plus installation. The first instance of Investigator Plus will always become the 'master' because this will store the analysis SQL database. All subsequent Investigator Plus installations are workers who communicate with the master SQL database maintained on the first instance of Investigator Plus.



### Investigator Plus Network Architecture

Investigator Plus can be implemented both on-premises and in an Azure tenant, however due to the nature of the task, it is generally implemented on-premises. The diagram used below assumes connecting to Microsoft 365 or Azure as the target. Internal Public can reside either within an on-premises data center or within Azure.



## Power Platform Add-On

Investigator Plus collects vital technical information about Domino databases for migration purposes but to fully perform an analysis, physical analysis and effort allocation should be documented.

Adopteq consulting utilize a Power App to perform this phase of the project along with Power BI to deliver the dynamic reporting.

This information can be stored on alternative platforms or recorded in Investigator Plus which will store information directly in SQL express for reporting purposes.

## Learn more about Adopteq AB

For more information on Adopteq, visit us at [www.adopteq.com/about/](http://www.adopteq.com/about/)

Social Media



© Copyright 2023, Adopteq AB. All rights reserved.

*The Adopteq logo are registered trademarks, and any references to Adopteq's products and services are trademarks, of Adopteq AB. All other trademarks are the trademarks or registered trademarks of their respective rights holders*