

# MIGRATOR PLUS INSTALLATION GUIDE

Product Version 4.11  
Updated 11 May 2023

## Table of Contents

About Migrator Plus Documentation .....	2
Purpose & Audience .....	2
1. Hardware & Software Requirements .....	3
A. Hardware Requirements .....	3
Master Migration Workstation.....	3
Migration Workstation.....	3
Domino Staging Server.....	3
B. Software Requirements.....	4
Migration Worker.....	4
C. Pre-Requisites/Readiness Checklist.....	4
Migrator Plus Service Account.....	4
D. Licensing Requirements.....	4
2. Installation of Migrator Plus.....	5
E. Download .....	5
F. Setup.....	5
G. Architecture Diagrams.....	8
Migrator Plus Architecture Diagram.....	8
Migrator Plus Network Architecture.....	9
Learn more about Adopteq AB.....	10

## About Migrator Plus Documentation

Documentation for Adopteq's Migrator Plus Product(s):

- Release Notes – Describes the current release of Migrator Plus and any new and enhanced features, resolved issues, and known issues.
- Installation Guide – An orientation to the product's basic purposes, features, and capabilities. It documents system requirements and explains how to install the software and obtain licensing.
- Planning & Operation Guide – summary of Migrator Plus's primary components and features, overviews of component and process instructions and guidance on how to execute content migration to multiple targets from Notes/Domino.

Please note that Lotus Notes and Domino are used interchangeably within this document for ease of legacy understanding and wording.

## Purpose & Audience

This document assumes the reader has a minimum of one year's experience using a Notes Client and has a good general knowledge of Domino Administration, the Domino designer client as well as Windows administration, SharePoint, and the Power Platform. If Domino/Notes topics mentioned in this guide are not understood, please refer to the HCL Notes or System administration documentation.

# 1. Hardware & Software Requirements

Migrator Plus can be installed either on-premises or cloud-based such as Azure. The below requirements are standardized, and the actual quantity and specification may change depending upon the migration size you are executing.

## A. Hardware Requirements

### Master Migration Workstation

The master migration workstation is the first worker you install in your environment and will host SQL Express.

	Comment
<b>Windows Workstation Version 10</b>	Can also be installed on Windows Server
<b>Minimum RAM 32GB (64GB recommended)</b>	Dependent on migration volume
<b>Minimum 80GB hard drive</b>	Dependent on migration batch + 30% free space
<b>Minimum 2 CPU/Core/VCPU</b>	

### Migration Workstation

Migration worker quantity is determined based upon the size, volume, and timeline you have allocated to complete the migration.

	Comment
<b>Windows Workstation Version 10</b>	Can also be installed on Windows Server
<b>Minimum RAM 16GB (32GB recommended)</b>	Dependent on migration volume
<b>Minimum 80GB hard drive</b>	Dependent on migration batch + 30% free space
<b>Minimum 2 CPU/Core/VCPU</b>	

### Domino Staging Server

Although not mandatory, we highly recommend utilizing a staging server. The number of servers and storage capacity is determined by size, volume, and speed you have allocated to execute the migration.

	Comment
<b>Domino 8.5.3 – 10 with latest fixpack</b>	Later Domino versions are not supported
<b>Minimum RAM 16GB (32GB recommended)</b>	Dependent on migration volume

<b>Minimum 2TB hard drive</b>	Dependent on migration batch + 30% free space
<b>Minimum 2 CPU/Core/VCPU</b>	

## B. Software Requirements

### Migration Worker

	<b>Comment</b>
<b>IBM Notes client 9.01 – 10 (all clients)</b>	Standard, admin, designer
<b>Microsoft Office</b>	
<b>SQL Express</b>	Master migration worker only
<b>.NET 4.7.2 package</b>	

## C. Pre-Requisites/Readiness Checklist

Before implementing Migrator Plus, review the pre-requisite checklist to ensure the environment is prepared to perform successful migrations. The pre-requisite checklist for Migrator Plus will be provided by our services organization or ask [sales@adopteq.com](mailto:sales@adopteq.com) for the latest version.

### Migrator Plus Service Account

For all migration types, a Lotus Notes account is required with sufficient access to all content in scope for migration in each database.

We recommend (as per the pre-requisites) you run Migrator plus using service accounts. You will need two (2) accounts. One to access the source content and one to access both the migration environment and the target platform for the migrated content.

- Lotus Notes ID
- Active Directory Account

Refer to the pre-requisites checklist for required security permissions.

## D. Licensing Requirements

Before installing Migrator Plus, ensure you have sufficient licenses to conduct the migration. Migrator Plus is licensed per database. Each database migrated will consume one (1) license. Migrator Plus may be installed without a valid license, however this will restrict each migration performed to 5 documents. Migrator Plus will ask if you wish to use a license during a migration. If you are unsure of your license options, contact [sales@adopteq.com](mailto:sales@adopteq.com).

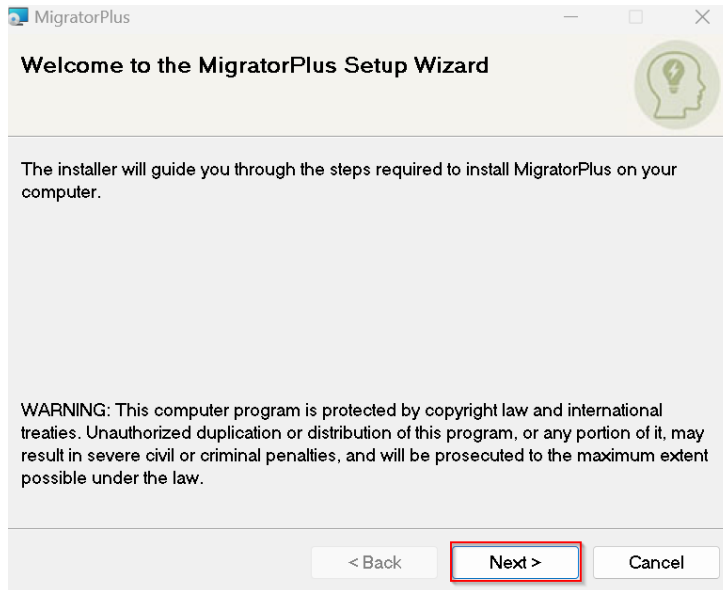
## 2. Installation of Migrator Plus

### E. Download

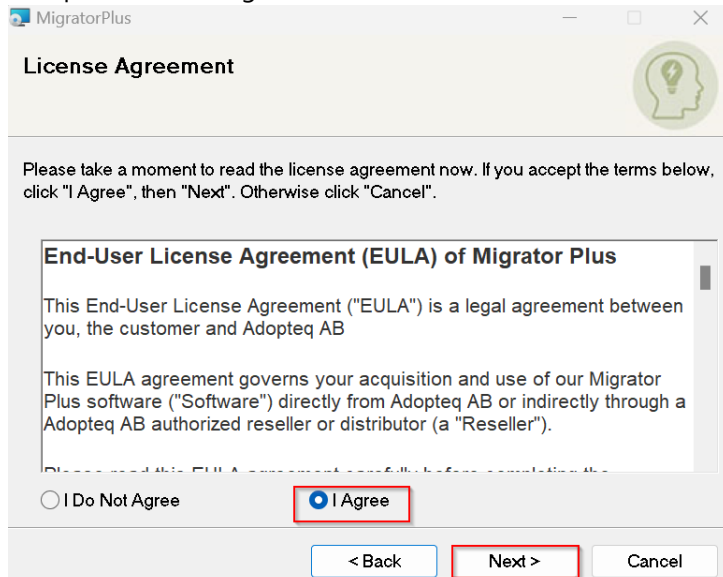
Adopteq maintains the latest release of Migrator Plus Setup installation package on a secure web site. Adopteq will provide the link and credentials to the download location.

### F. Setup

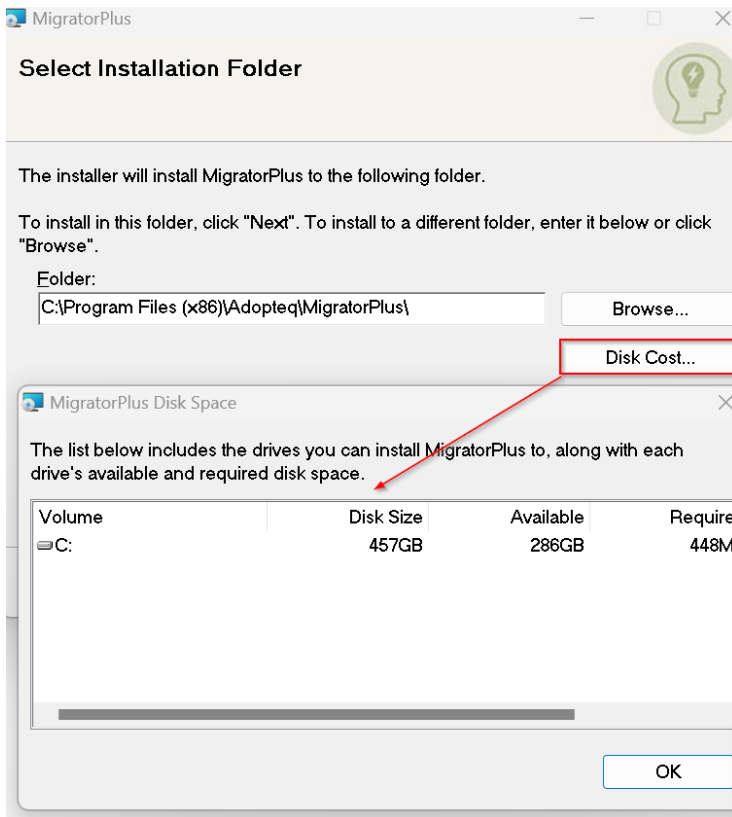
1. Download the installable file shared with you and double click on it to start the installation.
2. Click on Next to start the installation.



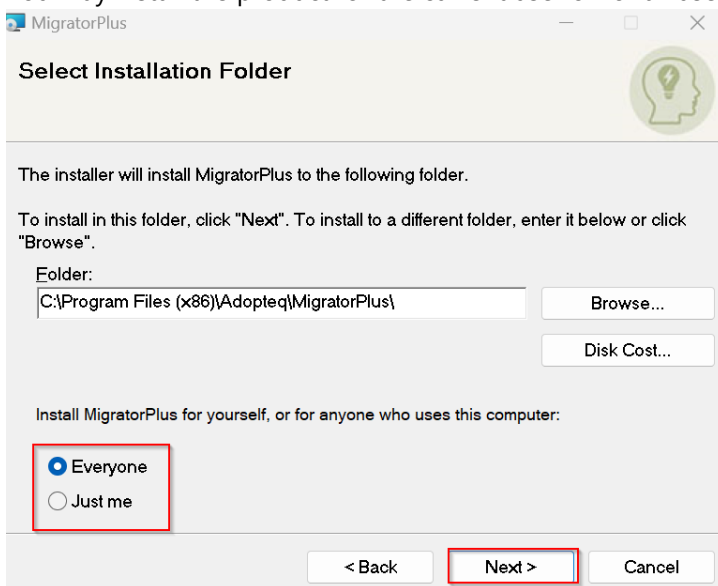
3. Accept the license agreement and click on Next.



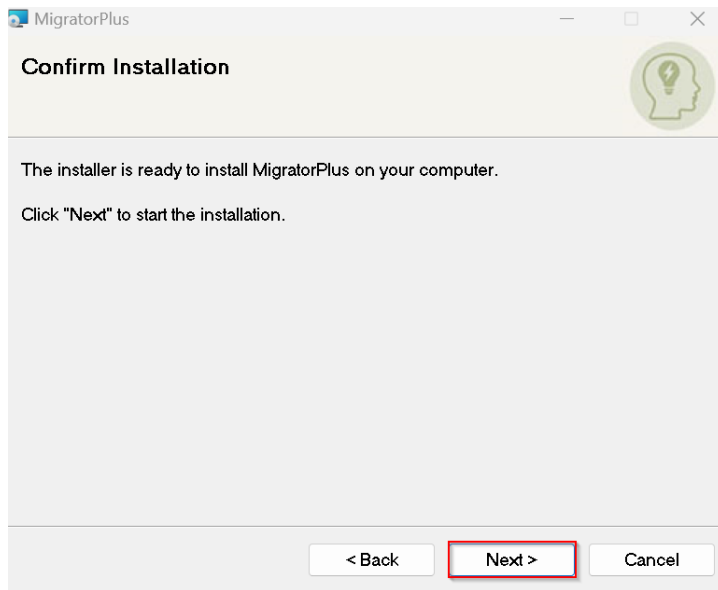
4. To get a quick guide to required and available disk space click on Disk Cost.
5. You may change the folder for migrator plus installation or go ahead with the default folder.



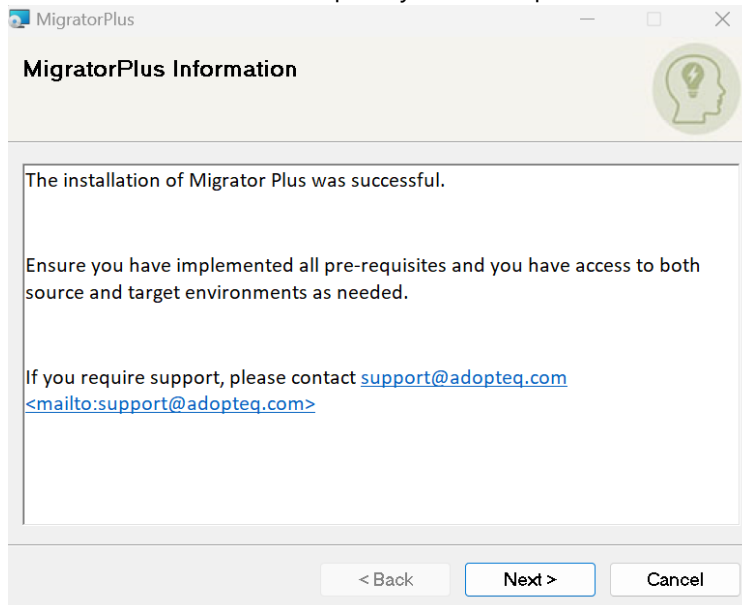
- You may install the product for the current user or for all users using the system.



- Click on Next to start the installation.

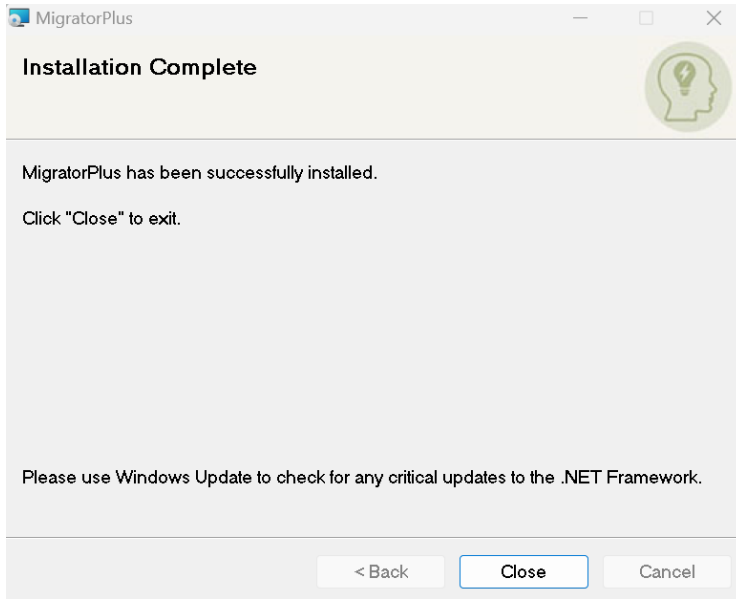


8. Once the installation is complete you will be presented with this message.



9. Click on Next to finish the installation.  
10. Click on Close to close the migrator plus installer.

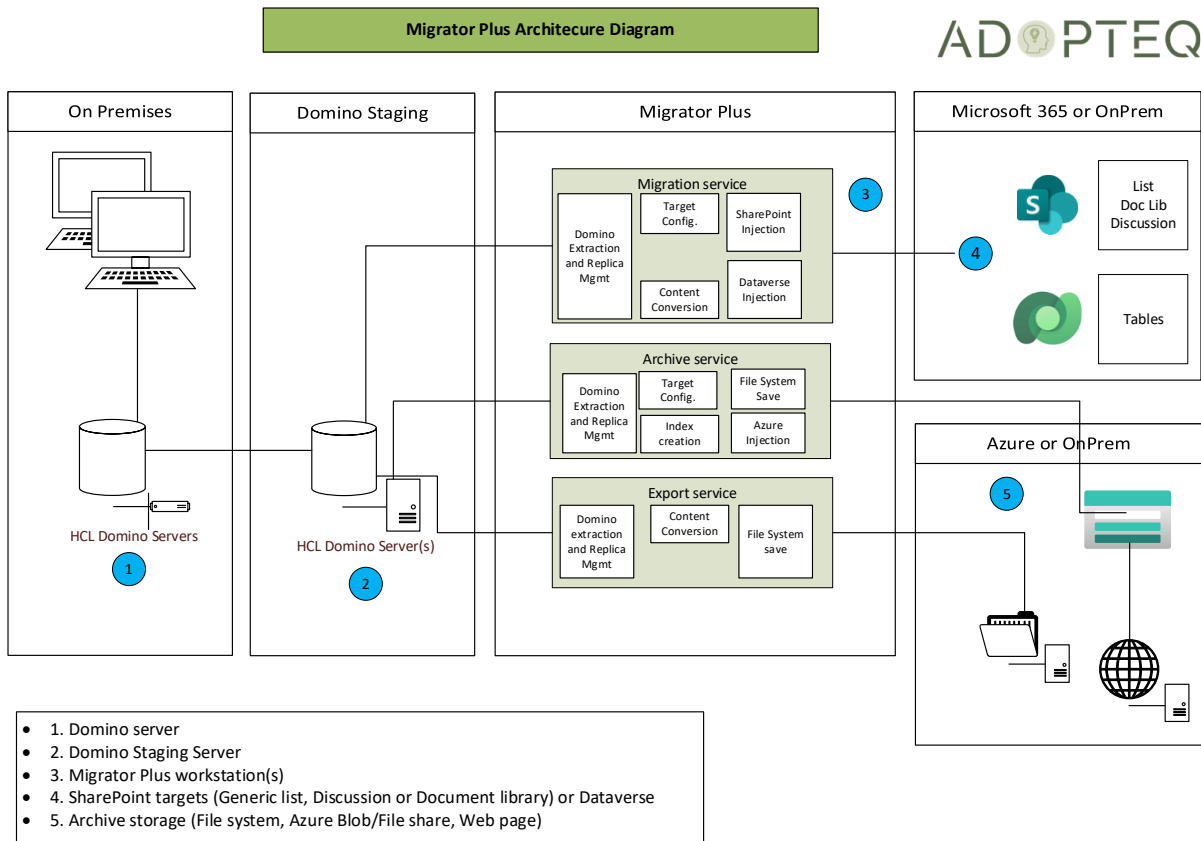




## G. Architecture Diagrams

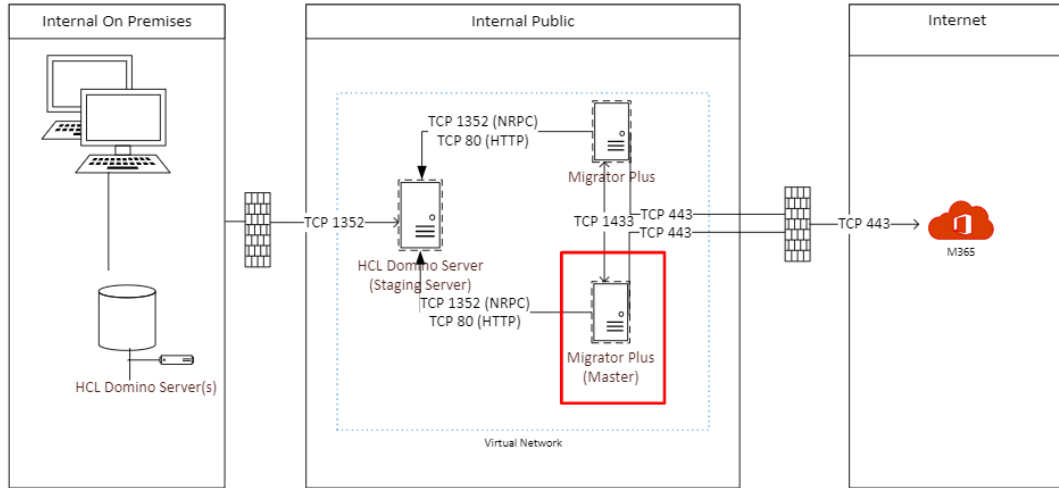
### Migrator Plus Architecture Diagram

A Migrator Plus implementation consists of at least one Migrator Plus console or worker. The first instance of Migrator Plus will always become the 'master' because this will store the migration SQL database. All subsequent Migrator Plus installations are workers who communicate with the master SQL database maintained on the first instance of Migrator Plus.



## Migrator Plus Network Architecture

Migrator Plus can be implemented both on-premises and in an Azure tenant. The diagram used below assumes connecting to Microsoft 365 or Azure as the target. Internal Public can reside either within an on-premises data center or within Azure.



## Learn more about Adopteq AB

For more information on Adopteq, visit us at [www.adopteq.com/about/](http://www.adopteq.com/about/)

Social Media



© Copyright 2023, Adopteq AB. All rights reserved.

*The Adopteq logo are registered trademarks, and any references to Adopteq's products and services are trademarks, of Adopteq AB. All other trademarks are the trademarks or registered trademarks of their respective rights holders*